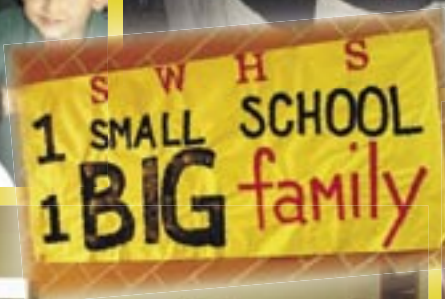


# ROCK SOLID

Academically, Spiritually, Financially



ST. WENDELIN CATHOLIC SCHOOL

2011 Annual Report

July 1, 2010 to June 30, 2011



## ► From the Director of Parish & School

I am privileged to be serving St. Wendelin Parish and School as the first director. When I was hired, I was asked to assume the responsibility of the daily activities of the parish and school. My dedication and effort will offer Fr. Weibl more time to devote to his spiritual responsibilities as pastor.

I have been asked why I have chosen to return to Fostoria. I was born and raised in Fostoria and have good memories. I have been gone for 15 years. During that time, I experienced mission work, taught in Catholic schools and was Director of Operations at St. Ursula Academy in Toledo. I discovered the Catholic faith while teaching at Tiffin Calvert and joined the Church in 2000. When the director's job was offered, I found I had a strong desire to come back to Fostoria and raise my daughter, Genevieve, with my wife, Ruth. Ruth has a real passion for the poor and for our faith. She served as a missionary in Zimbabwe and currently serves as Director of Wood County

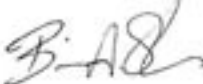


Habitat for Humanity. We believe that we are part of a world community and I hope to share this philosophy with our students.

I accepted the position with enthusiasm. I believe in the wholesome, Christ centered atmosphere of our school and parish as we share our faith with one another, both in parish and school. I enjoy the partnership with St. Wendelin Principal, Mike Amlin. Together with the generosity of St. Wendelin people and friends in Fostoria and the surrounding communities, we will succeed. The four pillars of our school of faith, goodness, discipline and learning will continue to challenge our vision. As I raise my child, and possibly more children, I see this as the place for us. The Lord has called me and I was happy to answer.

I am impressed by your generous gifts to the Annual Fund and the Educational Foundation. My prayer for all donors is one of gratitude; may we all continue to give back to our community in thanksgiving for what we have received. We can never outdo God in our generosity.

May God bless all of you.

  
**Brian Shaver**

## ***Dear Benefactors,***

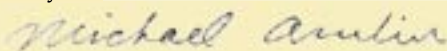
I am grateful for the opportunity to be at St. Wendelin. It is great to be back at my alma mater! Our school and parish is a true T.E.A.M., where **T**ogether **E**veryone **A**chieves **M**ore. When we work together through Christ and have faith and trust in each other, at the least we have a great place to be and, at the most, anything is possible.

Teaching and learning is the heart of what we do and I feel blessed to play an active part in the realization of our mission to instill Faith, Goodness, Discipline and Learning in our young people. We support, encourage and challenge our students in all four pillars. St. Wendelin guides and molds individuals to be and achieve their best, with the understanding that they are also a part of, and responsible to, a larger community. This year, when we come together to celebrate our successes and strengths, we include all of you, our pillars of support, who enable us to keep St. Wendelin School moving in a positive direction!

We are in the profession of preparing children for life, molding them as individuals, community members and future leaders in society. The teachers are focusing this year on working together in their content departments to more fully infuse our Mission Statement into the classroom. Students will be provided many opportunities to grow in knowledge and faith, to explore their talents and abilities and to nurture their potential. Exciting opportunities are available to students, including post-secondary classes (23 students currently enrolled) and the new Model U.N. program under the leadership of Brian Shaver, Director of Parish and School.

I look forward to working with you in moving St. Wendelin into the future. We were meant to be at this place (St. Wendelin), at this time (2011). God has a higher purpose in mind and I am excited for Him to reveal it.

God bless you for your generosity to St. Wendelin School. Please continue to pray for our students and staff throughout the school year.



Michael Amlin



## ► St. Wendelin is ROCK SOLID

*“And the rain fell, and the floods came, and the winds blew and beat on that house, but it did not fall, because it had been founded on the rock.”* MATTHEW 7:25

School families are blessed with finding an educational experience for their sons and daughters that will allow them to be the best they can be in life.

St. Wendelin School has been **Rock Solid** in educating young people for more than 100 years. Ensuring each student is challenged to reach his/her potential and is equipped with the educational tools needed to succeed in the world today.

Being **Rock Solid** spiritually continues to be the reason St. Wendelin exists. By providing exceptional educational experiences centered on Christian values, students have many opportunities to pray, engage in service to others, and grow deeper in their faith.

St. Wendelin School takes pride in the family atmosphere that permeates the school and the school community. From the dynamic learning environment

in the K-6 program to the diverse experiences offered in the 7-12 program, students become self assured, caring individuals, accepting of others, and welcoming to all. St. Wendelin students develop **Rock Solid** friendships that last throughout life.

St. Wendelin School has **Rock Solid** financial support. The successful Annual Fund effort provides consistent funding for the school's operation. The St. Wendelin Schools Educational Foundation, with assets totaling \$2.6 million, secures the school future and provides grants to families who want to give their children the experience of a Catholic education.

Come for a visit and see for yourself why St. Wendelin School is **ROCK SOLID** Academically, **ROCK SOLID** Spiritually, **ROCK SOLID** financially, and **ROCK SOLID** Socially.



ST. WENDELIN  
CATHOLIC SCHOOL

### MISSION STATEMENT

*Inspiring and challenging students in:*

*FAITH... through family, worship, education and values.*

*GOODNESS... by becoming socially, ethically, and morally responsible citizens committed to leadership and service.*

*DISCIPLINE... of mind, body and soul for the challenges of life.*

*LEARNING... life-long lessons through a faith-based program of studies and extra-curricular opportunities.*

As St. Wendelin High School celebrated its 90th commencement ceremonies in May 2011, we recognized the 33 graduates and their families who have made a strong commitment to educational and spiritual growth through Catholic education.

Special congratulations to valedictorians **Duncan Campbell** and **Sarah Walas**, and this entire class of leaders, scholars and athletes.

The ongoing investment by families, parishioners and communities provides many opportunities for success to St. Wendelin students:

- ◆ The Class of 2011 has accepted \$528,550 in merit-based scholarships and awards. (\$2.8 million in scholarships offered.)
- ◆ Model United Nations is offered for ½ credit. Students assume the roles of ambassadors to the United Nations and are provided with an agenda comprised of items also being debated by the real United Nations in New York. Students, acting as delegates, research the issues from the agenda and study their assigned nation's point-of-view in order to accurately represent the country.
- ◆ The Bishop's Cross was awarded to **Duncan Campbell** and **Katelyn Schiefer**.
- ◆ Five graduates are continuing their education at Catholic colleges and universities.
- ◆ Service hours for the Class of 2011 totaled 6,856 (3,556 beyond the required amount.)
- ◆ Twenty-three high school students are taking one or more post-secondary classes.
- ◆ Fourteen students serve as Extraordinary Ministers of Holy Communion.
- ◆ The St. Wendelin Schools Educational Foundation provided more than \$100,000 in tuition grants to school families for 2010-2011.
- ◆ Fifteen named scholarships are awarded annually to graduating and current students.





### ***Ensuring the Future of St. Wendelin School***

Our parents teach us what is right from wrong at a young age and help us to develop our moral character. It is a Catholic education at St. Wendelin where these seeds of character come to fruition.

As St. Thomas Aquinas, patron saint of Catholic schools, learned while studying Nicomachean Ethics, *“humans flourish through righteous actions, often done under the influence of teachers, allowing the development of the right habits, which in turn can allow the development of a good stable character in which the habits are voluntary.”* It is as successful adults that we reap the rewards of cultivating this character as productive members of society. We must remember to return the benefits that we receive from our development back to the school that supported us in our growth.

Giftng to St. Wendelin School is important to me because I feel it is my responsibility as a member of the community to help make a Catholic education available to the current and coming generations, just as it was available to me. If our generation doesn't continue to reinvest in the school that was provided to us by the hard work and generosity of those who came before us, then it will not be available to those who follow. We will have nothing left of our Alma Mater but the wonderful schoolyard memories and the regret that we didn't provide the resources to a Catholic institution that has bettered our community for many years. Although I don't have any children today, my hope is that my current giving will ensure that St. Wendelin School will be here in the future to help teach my children faith, goodness, discipline and learning, and will help them develop into the civic leaders of tomorrow.

Please join me in ensuring the future of our school and allow future generations to enjoy a sound education and the opportunity to thrive with a Catholic education.

**Ford Mennel '97**



*Now it is easier than ever to make a donation to St. Wendelin School!*



You can donate to the Annual Fund or the Educational Foundation safely and securely, simply by clicking the “Donate now” button on the St. Wendelin website.

If you already have a Paypal account, you are set to proceed. If not, it’s easy to begin donating online by establishing an account.

If you’ve been thinking of making a donation to St. Wendelin School and just haven’t taken the time, visit us at [stwendelin.org](http://stwendelin.org) and send your gift today.

Your generosity enables us to provide an outstanding educational experience for today’s young people.

---

## Endowed and Non-Endowed Scholarships and Grants

- ◆ Frank and Mary Bugner Family Scholarship
- ◆ Emiel and Mary Cool Scholarship
- ◆ Timothy G. Gregory Memorial Scholarship
- ◆ Rev. Donald S. Hunter Memorial Scholarship
- ◆ Huss Humanitarian Award
- ◆ Karcher Music Scholarship
- ◆ Donna O. Lynch Memorial Scholarship
- ◆ Amelia Winona Peak Memorial Scholarship
- ◆ Damon Pinskey Memorial Scholarship
- ◆ Peggy Lee Podach Memorial Scholarship for Graduates
- ◆ Peggy Lee Podach Memorial Scholarship for Returning Students
- ◆ William F. and Corrine Reineke, Sr. Scholarship
- ◆ Dean W. Sheibley Memorial Science Scholarship
- ◆ St. Wendelin Jubilee Grant
- ◆ David Shultz Memorial Scholarship

### *Dear Believer in St. Wendelin Catholic Education,*

The other day, I was listening to a talk show. The host mentioned how excited we are in teaching the children the magic words of 'thank you' and 'please.' How quickly we seem to forget those words in our adult lives as we demand, ask, suggest, but without the gentleness of thanks and please. I catch myself doing it, too.



So, to all of you, THANK YOU for your support! Thank you for opening your wallets and bank accounts for our work. Please continue to do so that we can educate our future students.

I will remember you gratefully at the celebration of our Thanksgiving meal (Mass) every day.

A handwritten signature in cursive script that reads "Fr. Nicholas Weibl".

Fr. Nicholas Weibl, Pastor

---

## DEVELOPMENT INITIATIVES

We are grateful for the 457 donors to the 2011 Annual Fund.

- ◆ Again this year, the number of donors increased in the region and across the country.
- ◆ A \$25,000 Challenge Grant provided an exciting motivation for donors to send a first gift or increase the amount of a gift. This motivation was evident in the 135 new donors who sent contributions.
- ◆ The concentrated effort by the development department, parish and school administration, and alumni leaders proved most successful. The \$156,838.62 raised through the Annual Fund represents consistent, unrestricted gifts, which address affordability, teacher compensation, programs and facility upkeep for St. Wendelin School.
- ◆ The Alumni Phonathon was successful, garnering an additional 60 gifts. This event is held twice a year.
- ◆ A result of this enhanced effort, we are able to begin updating the alumni database with current mailing addresses, email addresses and phone numbers. Please visit us at [www.stwendelin.org](http://www.stwendelin.org) and update your information today.
- ◆ Key investments made possible through the Annual Fund enhance our mission-driven projects to provide classroom tools and quality educational tools for St. Wendelin students.

The St. Wendelin School Advisory Commission would like to extend thanks to everyone for your important contributions that support the existence of St. Wendelin School.

- ◆ Pastors ~ for your leadership of the Catholic Church!
- ◆ Tuition paying families!
- ◆ Parishioners ~ for your generous support of St. Wendelin students!
- ◆ Alumni and friends ~ for your financial support and volunteer time!
- ◆ Local and area business leaders ~ for your support and services!
- ◆ Every faithful contributor in every region across the United States!

## 2011-12 St. Wendelin School Advisory Commission

Joe Emerine, President  
Brian Shaver, Director of  
Parish and School

Michael Amlin, Principal  
Tom Borer

Susan Campbell

Shilo Frankart

Gabe Gonzalez

Natalie Hay

Karen Hoover

Jonathan Nye

Brandon Preble

Doug Reineck

Jane Volpe



## Bishop Robert J. Baker Council

The Bishop Robert J. Baker Council was established in 2009 as an opportunity for committed donors to support St. Wendelin School in a significant way through the Annual Fund. Members of this group donate \$5,000 or more annually.

Bishop Baker, who currently serves as Bishop of the Birmingham, Alabama diocese, attended St. Wendelin Elementary School with the SWHS Class of 1962 before beginning his studies for priesthood.

This important effort for the Annual Fund was integrated into annual efforts to provide consistent, unrestricted operating funding to the school's operation, focusing on affordability, teacher compensation, programs and facility upkeep.

During the 2010 Annual Fund year, seven donors became the charter members of the Bishop Baker Council. This year, ten generous benefactors have continued the growth and contributed greatly to the success of the 2011 Annual Fund.

## ► Annual Fund Efforts

Revenue to support the Catholic school experience at St. Wendelin School is significantly dependent upon the generous support of our St. Wendelin community for the annual fund. *Thank you!*

The summary below is the result of the annual fund effort over the past two years.

Gift Levels	Actual 2009	2009 \$\$\$	Actual 2010	2010 \$\$\$	2011 Goal	2011 Goal	Actual 2011	2011 \$\$\$
\$ 1,000+	11	\$12,200	44	\$ 82,900	55	\$ 95,000	43	\$107,763.24*
\$500-999	11	\$ 5,750	20	\$ 12,650	25	\$ 12,500	29	\$ 16,020.00
\$250-499	20	\$ 5,250	29	\$ 7,250	40	\$ 10,000	37	\$ 10,826.00
\$100-249	71	\$ 8,370	117	\$ 14,700	200	\$ 20,000	156	\$ 15,689.38
\$ 1-99	68	\$ 2,672	163	\$ 7,734	250	\$ 12,500	192	\$ 6,540.00
<b>TOTAL</b>	<b>181</b>	<b>\$34,242</b>	<b>373</b>	<b>\$125,234</b>	<b>570</b>	<b>\$150,000</b>	<b>457</b>	<b>\$156,838.62</b>

\*includes 10 gifts of \$5,000 or more.



### Received To-Date

Gifts, outside Ohio	21%
Gifts from Ohio, outside Fostoria	29%
Gifts from Fostoria	50%
<hr/>	
# of new donors	135
# of donors who increased gift level	43

*“St. Wendelin is a school like no other. We are a small school, but that’s not really special; there are plenty smaller. And of course, we’re Catholic, which is very important and affects all we do at St. Wendelin, but that’s still not what distinguishes our school. No, what really does it, are the people...*

*“Something about not the building but the people makes you feel warm and accepted. From the moment you walk in the door, you know...*

*“It is this feeling of family that will help us the most later in life. Every school can give you an education and St. Wendelin gives you a particularly excellent one, but our school gives us the interpersonal experience that I cannot imagine getting anywhere else...*

*“We have been forced to work through problem after problem together and it has only made us stronger. It has created confident, friendly, assertive young adults who will go on to take the world by storm...*

*“Don’t take it for granted. Our years here have made us who we are.”*

From valedictory address by **Sarah Walas ‘11**

It is with sincere thanks and gratitude that we acknowledge the generosity of the contributors who graciously donated to the 2011 Annual Fund by June 30, 2011. If we have omitted your name inadvertently, please call Mary Anne Nopper in the Development Office, 419-435-6692.

## ***Bishop Robert J. Baker Council*** **(\$5,000+)**

Anonymous  
Bishop Robert J. Baker Family  
Ronald '75 and Evie Burns  
Donald L. and Louise Mennel  
The Mennel Milling Company  
Thomas A. '77 and Stacey J. Reineke  
Edward '62 and Joyce Shultz  
Mark '85 and Stacey Vande Kerckhoff  
Rev. Nicholas Weibl  
In memory of Golden Kim Wray and  
Maryann Kiss Hamernik

## ***Black and Gold Society*** **(\$2,500-\$4,999)**

Anonymous  
Dr. Steve '77 and Cyndi Geroski  
Michelle Lippert

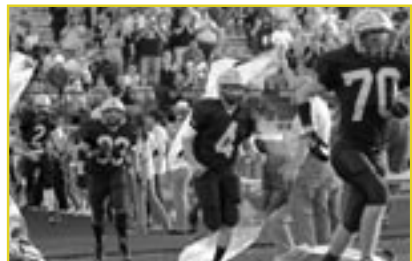
## ***Rev. Ambrose Weber Society*** **(\$1,000-\$2,499)**

Anonymous  
Dr. Harry and Patti Bash  
Thomas J. Blaser '50  
Jack and Geraldine Brubaker  
Todd '78 and Amy Burns  
Dow and Susan Campbell  
Cooper Tire and Rubber Company\*\*  
Leonard and Dorothy Coppler  
Marian Geroski  
Ed and Connie Frankart '76 Gross  
Irene Hunter  
Joe and Rheyma Kelbley  
Gerald and Sandra King  
Frank and Dolores Kinn  
Marylin Kinn '59  
Lyle and Mary Lahman  
Frank '58 and Becky '61 Malagon  
Dr. David '92 and Stephanie McCarty

Ford Mennel '97  
Ronald and Rose Ann '53 Nye  
Dr. Thomas '83 and Denise Padanilam  
Laszlo and Piroska Papp  
John Pocs '48  
Joseph Pocs '57  
St. Wendelin Class of 2011  
Tom Sheeran '47  
Aaron '75 and Donene Smith  
Dale and Mary '78 Smith  
Mike and Kae Sobczyk  
Robert '56 and Mary Williams

## ***Principal's Circle*** **(\$500-\$999)**

Abbott Fund Matching Grant Plan\*\*  
Anonymous  
Anonymous  
Anonymous  
Stephen and Karen Brickner  
Joseph D. Clark, Jr. '59\*  
Ann J. Frankart  
Thomas '58 and Carol '58 Hagenmaier  
Jay Hipsher '74  
Dan and Cynthia McNinch  
Matthew '92 and Angela '92 Meyers  
Steve '67 and Jane '66 Moes  
Mary Anne Nopper  
John and Theresa Petrlich  
Bill and Barb Reineck  
Mark Ridge '98



# ► Annual Fund Contributors

Fr. Dan Ring  
Ruth Saenz '49 and Family  
David and Jackie Schiefer  
Donna Schreiner  
Annette Shaull  
Margaret Shaull '49  
Rev. Raymond Sheperd  
Fred '69 and Darlene Smith  
John '69 and Peggy Souder  
Herman and Jane '57 Vande Kerkhoff  
Joe and Theresa '87 Webb  
Thomas Weber '95\*  
James S. Whitta '79

## ***Benefactors*** **(\$250-\$499)**

Cindy Lee '83 Adkins\*  
Joseph '74 and Brenda '76 Alge  
Anonymous  
Tom '66 and Becky '68 Baker  
David O. Banks '58  
Stephen Banks '68  
Ginger Baringer '69  
Rev. John Blaser '54  
Annabelle Bouillon  
Frank '52 and Marilyn Bugner  
Patricia Bulkowski '57  
Brad and Dwynn LaFontain '59 Coury  
BP Fabric of America Fund/  
Jeffrey Droll '73  
William S. Faber '58  
Joella Feasel  
Mildred Gallant  
Charles and Diane Goddard  
Carol Haney  
Rick '85 and Jolene Johnson

Ronald and Theresa Karns  
Brian Kinn '88  
Terry and Cathy '73 Krupp  
John and Tamara Luchini\*  
National Funeral Directors  
Association  
Robert '58 and Dianne '60 Park  
Pfizer Foundation Matching Gifts  
Program\*\*  
Mike '71 and Jan Reinhart  
Jerry '55 and Jeanie '57 Reiter  
Rockwell Collins Matching Gifts  
Program\*\*  
Dr. Kevin '89 and Anita Schroeder  
Andrew Sheeter '90  
Jeannine Sheibley '58  
Allen '84 and Lori '86 Shontz  
Agnes Spitzer  
Betty Tobin  
Mary Ann Welly '58  
Brian J. '97 and Katie Frederick '98  
Whitta

## ***Century Club*** **(\$100-\$249)**

Joseph Affholder '71  
Anonymous  
Anonymous  
Anonymous  
Anonymous  
Anonymous  
Anonymous  
Anonymous  
Susan Bahl '61  
Mark '79 and Jackie Baker  
James Banks '62  
Sally Batchelder '73  
Geneva Blaser  
Nannette Bodart  
Stephen '69 and Jacqueline Bodart  
Marvin and Mary Rose Boes  
Msgr. Marvin G. Borger  
Stephen B. Brown '77  
Stephen J. Brubaker '72  
Ed and Diane Bugner  
John Bugner '63



Marilyn Bugner  
 Roger Burns '61  
 Leroy Calmes '46  
 Jeff and Pat Clagg  
 Bernard '49 and Patsy Conine  
 Anne Cooper '84  
 Andrew '99 and Lisa Crates  
 Margaret Kiebel '61 Daignault  
 Kateri LaFontain '64 DeMargel  
 Paul '49 and Phyllis Dibling  
 Carl and Barbara Dierksheide  
 Dennis '71 and Emma '73 Doogs  
 Leah Evans  
 Bill '69 and Terri '76 Faeth  
 Claude and Julie '57 Fant & Family  
 Sheryl Filiater '75  
 Mary Ann Sheeran '65 Flynn  
 Michael J. Foos '69  
 Robert Furillo '62  
 Brad and Jodi '92 Geduldig  
 Eric '88 and Mary Gies  
 Andy '92 and Mary Goshe  
 Mary Gray '45  
 Steve '62 and Sandy Haaser  
 Gerald '69 Hagenmaier  
 Jim '56 and Nancy Hagenmaier  
 Duane and Mary Jo Hammer  
 Phil and Judy '68 Helterbrand  
 Rob '78 and Sandy Herman  
 Patricia Lehman '48 Hickey  
 Clifford P. Holman '56  
 Gerry '63 and Barbara Holman  
 James '51 and Rachel Holman  
 Brandon and Tami '89 Honse  
 Joyce Clouse '68 Hostetler  
 John and Cheryl Howard  
 Renee '81 and Daniel Howard  
 Jennifer '92 and Shawn Kinley  
 Gene and Marge Kinn  
 John '63 and Susan Kinn  
 Steve '82 and Laurie '83 Kinn\*  
 Knights of Columbus #1197  
 Carl Kramb '42  
 Walter Kramb '44  
 William '41 and Maxine Kramb  
 Dominic '00 and Lavender Krupp



Linda Kuhn '65  
 Janet '74 and Paul Labbe  
 John '58 and Judy Lamberjack  
 Floyd and Susan Lawless  
 Mary Lou Lee '62  
 Sue Lowery '55  
 Cory Macias '51  
 Barbara L. Marley '65  
 Francis M. Marley, Jr. '60  
 Microsoft Matching Gifts Program\*\*  
 Carole Reiter '60 Miller  
 Richard E. "Ed" and Mary Miller  
 Paul Murphy '66  
 Michelle Murrin '73 Johns  
 Elaine Holman '68 Myers  
 Paulette Emerine '64 Myers  
 Charlie '89 and Theresa Nopper  
 Marguerite Nye '37  
 Thomas E. Nye, O.D. '81  
 Gene and Fayanne '60 Ochs  
 Mandi Anez '93 Ohlinger\*  
 Barbara E. Orozco '66  
 Tom and Elaine Lonsway '68 Paral  
 Rev. James E. Peiffer '59  
 Floyd and Patricia Potteiger  
 Mark and Amy '84 Reinhart & Family  
 Louis and Jeanne '71 Risner  
 Margaret (Altwies) '41 Rieker  
 Julie Herman '89 Roach  
 Mary Ellen Row  
 Christie Rusk '89  
 SWHS Class of 1965  
 Fr. Eric Schild  
 Richard and Mary Schreiner  
 Michael Schroeter '84  
 Rita Schultz

# ► Annual Fund Contributors

William and Gabrielle Scott  
Paul Seebon '41  
Jean Seibert '75  
Betty Sendelbach '50  
Paul and Sue '59 Sheeter  
Nick Shultz '01  
Steven G. Smith '79  
Joe Souder '76  
Robert and Donna Steyer  
Michael Stoner '78  
Margery J. Swint, M.D. '47  
Herb and Jan Thibodeau  
Bernard Vance '53  
Kathryn Wade '38  
Georgianna Widmer  
Steve '71 and Sue '71 Williams  
Stephen '66 and Anne Marie  
Wunderlin  
Stephen and Gail Zachmann

## *Gifts*

Maryalice Abood '57  
Jason Altwies '95  
Anonymous  
Anonymous  
Anonymous  
Anonymous  
Anonymous  
Anonymous  
Anonymous  
Anonymous  
Anonymous  
Anonymous  
Anonymous  
Anonymous  
Anonymous



Andrew Arend '93  
William Babb '79  
Carolyn Baker '49  
Chuck Baker '82  
Chris '98 and Tricia '98 Basinger  
Mike and Peg Beck  
Regina Bennett '44  
Aaron Bodart '97  
Carl '49 and Betty Bodart  
Michael Bodart '97  
Trina and Phil Boehnlein  
Donald '57 and Susan '60 Boff  
Catherine Bouillon '72  
Ron and Jane Bowerman  
Kathleen Brisendine '83  
Paul and Nancy '56 Brose  
Cindy Bruns '84  
Deborah Bulkowski '91  
Richard '74 and Julie '75 Bulkowski  
Marie (Kramb) '83 Campbell  
Larry Canterbury  
Lee and Anndi Canterbury  
Lyle and Cathy Canterbury  
Ruth Cassidy  
John and Paula Cockie  
Janice Cool '64  
Hazel Coppler-Rowles  
Geraldine Coppus  
David '90 and Dawn Crawford  
Allen Creeger '64  
Rosanne Cristanetti '63  
Richard Curry '57  
Tom and Janet (Reinhart) '76 Daney  
Peter A. DiCesare '75  
Jo Ann '53 and Roger Doe  
Stephanie Doogs '00  
Mary Lou Droll '45  
Brenton Duran '03  
Donna Elchert '47  
Stephen Elchert '79  
Thomas L. Evans '65  
Andy '99 and Andrea Faber  
David '61 and Jane '64 Faber  
Jim Faber '57

*(GIFTS con't. on page 16)*



## ***A Tribute to St. Wendelin School***

St. Wendelin School, the school administration and, of course, the teaching staff, gave me the strong foundation for my future years. The direct contact between staff members and

students was invaluable in shaping my character, my ethics, and my philosophy concerning life. The religion taught and lived was the most important tool for years to come.

While a good education, religious teaching and our relationship with God were the foremost objectives of St. Wendelin School, I remember with great fondness the good friends and lasting relationships that were formed. I think back on those years as safe, very fun, and being with friends for twelve years who were also learning good ethics and religious values. The small size of the school was also an asset, a big asset to me. Each one of us was certainly well known by everyone and received wonderful guidance. The staff really cared and was always accessible and supportive.

Reflecting on St. Wendelin School today, I believe these positive characteristics are still exhibited within the walls of my alma mater. Academically the school excels, judging from the high caliber of graduates' success.

St. Wendelin is my choice for a great gospel-based education. I hope that every family gives the decision of choosing a school for its children much thought and prayer. I continue to thank St. Wendelin and its staff for the many gifts I have received.

**Marylin Kinn '59**

## ► Annual Fund Contributors

Donna Farabee '56  
Jackie (Bouillon) '01 Finefrock  
Matt and Shelly '85 Fox  
Albert '58 and Janet '61 Frankart  
James Frankart '64  
Brett and Tammy '84 Frederick  
Victoria Frias '57  
Rosina J. Fritz '50  
Jean Fruth '59  
Peter and Ruth '67 Gallagher  
Gary and Carol Goetz  
Janet Haase '55  
Alice Hark  
Roxanne Harmon '66  
Dorene Harden '52  
Irene Hards '49  
Elbert S. Harris, Jr. '60  
William Heilman '44  
Rev. Gregory R. Hite  
Darrell and Sharon '63 Holman  
Scott Holman '94  
Tony and Helen Holman  
Ann Holmes '53  
Josephine Hoover  
Sharyn (Wolph) '62 Huffman  
Stephanie Hunker '03  
Sarah (Bradner) '04 Huska  
Kristy (Conine) '75 Janas  
Susan Bennett '64 Johnson  
Brian and Kristin (Chaney) '91 Jordan  
Sandy Jurrus  
Richard '46 and Garland Karcher  
Julie Kavanagh '56  
Louie Kitchen '63  
Kelly (Baker) '97 Kleinhenz

Jane Kovacs '56  
Barbara (Firth) '42 Kromer  
Jeanne Krupp '45  
Tom and Sharon '69 Krupp  
Jason and Meg (Baker) '95 Kunsman  
Richard and Susan Kusmer  
John Lamberjack '58  
Robert Lamberjack '49  
David and Cathy Lang  
Jane Lange  
Harold and Mary Lou Logsdon  
David Lonsway '73  
Brother Michael Lonsway '64  
Mike Lucius '67  
Carrie Lundenberger '95  
James '60 and Judy '60 Lynch  
Lois Menard '75  
Elaine Michney  
Donald B. Murphy  
Harold B. Myers '46  
William and Karen '74 Munson  
Daniel Nye '74  
Gretchen Nye '64  
Michael J. Nye  
James and Marsha Okuly  
Sara '95 and Chad Orr  
Charleen M. Pahl '50  
Larry Philipps  
John Pryba '96  
John R. Ray, Jr. '63  
Michael I. Ray '74  
John and Margaret Reinhard  
Robert '93 and Leslie Reinhart  
Candelario and Catalina Reyes  
Dan and Laura '72 Ritzler  
Jeff and Lynn '76 Ritzler  
Teresa (Storey) '92 Ruehle  
Gerard C. Rumschlag '72  
Jodi (Frias) '91 Rutherford  
Elsby and Margaret Saalman  
SWHS Class of 1953  
Melanie Saunders '00  
Anna Gase '33 Schetter  
Kathryn Reineke '89 Schneider  
Greg Schreiner '78  
Nanette Schuett



Alan and Debra Sendelbach  
 Michael Sheeran '66  
 Elizabeth Reiter '80 Shiekh  
 Chris (Faber) '85 Sibbersen  
 Leonard Skonecki '68  
 Patricia Smith '66  
 Maraquita Steinmetz '41  
 Joyce Stewart '55  
 Timothy Sulken, D.D.S.  
 Delores Sutter '55  
 Nikol Theis '92  
 Anna Thiry  
 Pamela Elchert '96 Thurmond  
 Angela '85 and Trey Tompkins  
 Dianne and David Uehlein  
 Joanne Valenti '46  
 Sheila McCarty '84 Vechiarella  
 Jane Wagner '77  
 Ed '74 and Theresa '74 Weber  
 Kris and Tom '74 Wenzke  
 Mary Ellen Werner  
 Louann Whitman '60  
 Melissa Whitmer '68  
 Patricia Wolfarth '44  
 Nanette Wright '69  
 Barbara Zeitz '87  
 Richard Zeyen '49

### *Gifts In Honor Of*

#### **Carolyn Baker**

Mark and Jackie Baker

#### **Helen Bradner**

Sarah (Bradner) Huska

#### **Susan Campbell's Birthday**

Trina and Phil Boehnlein

#### **The DiCesare Family**

Peter A. DiCesare

#### **Eugene and Eileen Emerine**

Paulette Emerine Myers

#### **Albert and Janet Frankart Family**

Albert and Janet Frankart

#### **Ann Frankart**

Ed and Connie Frankart Gross

#### **Julie Hagenmaier Clay's 40<sup>th</sup> Birthday**

David and Dianne Uehlein



#### **Howard Childrens' Baptism**

John and Cheryl Howard

#### **Living and Deceased Members of the Lewis and Anna Kramb Family**

Carl Kramb

#### **Ron and Rose Ann Nye**

Thomas E. Nye, O.D.

#### **Living and Deceased Members of the William B. Pahl Family**

Charleen Pahl

#### **Atha and Bob Philipps 72<sup>nd</sup> Anniversary**

Larry Philipps

#### **John Pocs**

Anonymous

#### **Jack and Sherry Reinhart**

Brandon and Tami Honse

#### **Fr. Dan Ring**

Rev. Gregory R. Hite

#### **Charles and Mary Ritzler Family**

Donna Elchert

#### **SWHS Class of 1961**

Roger Burns

#### **SWHS Class of 1969**

Ed and Diane Bugner

#### **SWHS Class of 2011**

John and Paula Cockie

#### **SWHS Mathematics Dept.**

Sheryl Filliater

#### **Sara's Confirmation**

Charles and Diane Goddard

#### **Fr. Eric Schild**

Rick and Jolene Johnson

#### **Marilyn Smith-McCoy**

Aaron and Donene Smith

# ► Annual Fund Contributors

## **William Stewart**

Todd and Amy Burns

## **Corrine Stoner**

Michael Stoner

## *Gifts In Memory Of*

### **Ben and Mamie Altwies**

Margaret (Altwies) Rieker

### **Doyle Baker**

Carolyn Baker

Chuck Baker

Chris and Tricia Basinger

Louis and Jeanne Risner

### **James Baker**

Tom and Becky Baker

Jason and Meg (Baker) Kunsman

### **Winifred and Willard Banks**

David O. Banks

Steve Banks

### **Thomas Basinger**

Chris and Tricia Basinger

### **Tammy M. Beck**

Michael and Margaret Beck

### **Robert D. Blaser**

Geneva Blaser

### **Raymond Bodart**

Nannette Bodart

### **Deceased Members of the**

#### **Boff Family**

Dorene Harden

### **Robert Bradner**

Sarah (Huska) Bradner

### **Joan Brenamen**

Family and Friends

### **Marion Brenamen**

Jeff and Pat Clagg

## **Ronald Brisendine**

Kathleen M. Brisendine

## **John, Rollen & Rolland Brubaker**

Jack and Geraldine Brubaker

Steven J. Brubaker

## **Frank and Mary Bugner**

Ed and Diane Bugner

## **Joseph Bugner Family**

Frank and Marilyn Bugner

## **Ray and Dolores Bugner**

John Bugner

## **William Bugner**

Marilyn Bugner

## **Josephine Bulkowski**

Patricia Bulkowski

## **Burns Families**

Roger A. Burns

## **Joseph N. & Lucille C. Calmes**

Leroy C. Calmes

## **James Chalfin**

Tom and Becky Baker

Jason and Meg (Baker) Kunsman

## **Archie and Mike Clagg**

Jeff and Pat Clagg

## **Joseph Clark, Sr.**

Roxanne Harmon

## **Rosemary Clark**

Joseph D. Clark, Jr.

## **Jim Clouse**

Anonymous

Joyce Clouse Hostetler

## **Conine Family**

Bernard and Patsy Conine

## **Emiel Cool**

Roxanne Harmon

## **Don Coughenour**

Robert Furillo

## **John Crawford**

Tom and Elaine (Lonsway) Paral

## **Deceased Members of SWHS**

### **Class of 1944**

William C. Heilman

## **Deceased Members of SWHS**

### **Class of 1975**

Peter A. DiCesare



**Margaret (Dibling) Devore**  
Barbara Orozco

**Frank DiCesare & Sons**  
Rosina J. Fritz

**Nick DiCesare**  
Nanette Wright

**Sheldon Doogs**  
Dennis and Emma Doogs

**Mary Jane Downes**  
Anonymous

**Don Droll**  
Mary Lou Droll

**Salvador Duran**  
Brenton Duran

**Roberta Hay Edwards**  
Anonymous

**Donald A. Elchert**  
Donna W. Elchert

**Juanita Elchert**  
Stephen Elchert

**Paul M. Evans**  
Leah M. Evans

**Anna Falewage**  
Marguerite F. Nye

**Bill Feasel**  
Joella Feasel

**Jack Fox and Rita Fox**  
Matt and Shelly Fox

**Agnes Frankart**  
James Frankart

**Herman Frankart**  
Ann Frankart  
Ed and Connie Frankart Gross  
Judy and Phil Helterbrand  
Julie Herman Roach

**Phil and Lila Frisch**  
Thomas Weber

**Virgil J. Fritz**  
Rosina J. Fritz

**Sherry Gallant**  
Mildred Gallant

**Joan Snyder Gillig**  
Anonymous

**Marilyn Gillig**  
Roger and Jo Ann Doe



**Nancy (Reese) Gingerick**  
Sally Batchelder

**Benedict Hammer**  
Lois Menard

**Shirley (Williams) Hanchin**  
Robert and Mary Williams

**Margaret and Ralph Hein**  
Jean Fruth

**Diann and Judd Herman**  
Rob and Sandy Herman

**Clifford W. "Chip" Holman**  
Clifford P. Holman

**Mr. and Mrs. William V. Holman**  
Gerry and Barb Holman

**Robert J. Hoover**  
Josephine Hoover

**William E. Hunter**  
Irene Hunter

**A.D. and Maybelle Kinn**  
John and Susan Kinn

**Alma Kinn**  
Marylin A. Kinn

**Paul and Mary Kintz**  
Gene and Fayanne Ochs

**Jim Kovacs**  
Jane Kovacs

**Joan Nye Kramb**  
Walter Kramb

**Deceased Members of the Lewis and Anna Kramb Framily**  
Carl Kramb

**Sr. M. Loisann Kramb, SND**  
William and Maxine Kramb

**Gerald L. Kromer**  
Barbara (Firth) Kromer

# ► Annual Fund Contributors

**Gerald and Catherine LaFontain**

Brad and Dwynn (LaFontain) Coury

**Harold and Priscilla Lamberjack**

John Lamberjack

Louann Whitman

**Robert C. Lamberjack**

John and Judy Lamberjack

Louann Whitman

**Alfred J. Lange**

Jane Lange

**Haven and Irene Lehman & Family**

Patricia Lehman Hickey

**Sister Mary Lewellyn, SND**

Susan Bennett Johnson

Brother Michael Lonsway

**Clarence, Hazel and Douglas**

Lonsway

Elaine C. Paral

**Henry and Audrey Macias**

Mark and Amy Reinhart & Family

**Dr. S.R. and Helen Markey**

Melissa Whitmer

**Christopher J. Marley**

Francis M. Marley, Jr.

**Francis M. and Barbara O. Marley**

Barbara L. Marley

**Michael Marley**

William S. Faber

**William Marley**

William S. Faber

**Judy (Woessner) Miller**

Jim Faber

**Anthony and Berneda Moes**

Annette Shaull

**Edward Moes**

Steve and Jane Moes

**Rose Walters Neuroth**

Richard and Mary Schreiner

**Helen and Lester Nye**

Anonymous

**Justin Nye**

Marguerite F. Nye

**Norma (Burns) Patterson**

SWHS Class of 1953

**Eugene and Rosemary Peiffer**

Rev. James E. Peiffer

**William and Jeannette Phillips**

Linda Kuhn

**Deceased Members of the**

**Pocs Family**

John Pocs

Delores Sutter

**Vilas and Catherine Reese**

Sally (Reese) Batchelder

**Leo and Celestine Reiter**

Carole Reiter Miller

Jerry and Jeanie Reiter

**Adam Ridge**

Mark G. Ridge

**Bill Row**

Mary Ellen Row

**Andrea Saenz Smith**

The Saenz Family

**Ernest Saenz**

The Saenz Family

**Ken Sauber, Sr.**

Roxanne Harmon

**Edward "Ted" Schetter**

Anna Gase Schetter

**Genevieve Schreiner**

Richard and Mary Schreiner

**Howard, Mark and David Schreiner**

Donna Schreiner

**Herman Schreiner**

Roxanne Harmon

**Bernadette Seebon**

Paul Seebon

**Roger Seibert**

Jean Seibert

**Howard "Pat" Sendelbach**

Betty J. Sendelbach



**Paul and John Shaull**  
Margaret Shaull

**Janet and Dr. Emmet Sheeran**  
Mary Ann Sheeran Flynn

**The Sheeran Family**  
Tom Sheeran

**Sheeter and Holman Families**  
Paul and Sue Sheeter

**Gerald, Violet and Dean Sheibley**  
Jeannine Sheibley

**Marganne Sherrard**  
Roxanne Harmon

**Rogers and Josephine Shock**  
Paul and Nancy (Shock) Brose

**David Shultz**  
Edward and Joyce Shultz

**Mary Souder**  
Joe Souder

**Richard Spitzer**  
Agnes Spitzer

**Wilfred Steinmetz**  
Maraquita Steinmetz

**James Stoner**  
Michael Stoner

**Margaret (Firth) Strouse**  
Barbara (Firth) Kromer

**Irene Stump**  
Margaret Kiebel Daignault

**Paul and Marie Swint Family**  
Margery J. Swint, M.D.

**Charles Thiry, Jr.**  
Anna Thiry

**John J. Tobin**  
Betty Tobin

**Ann, Rebecca, Catherine, John and Tom Vance**  
Bernard M. Vance

**Harry L. Wade**  
Kathryn M. Wade

**Frank P. Waltermeyer Family**  
M. Regina Bennett

**Arthur M. Walters**  
Richard and Mary Schreiner

**Mildred Weidner**  
Dianne and David Uehlein



**Richard Weber**  
Thomas Weber

**Ralph and Helen Weimerskirch**  
Julie Kavanagh

**Robert and Barbara Whitta**  
Chris and Tricia Basinger

**Richard G. Widmer**  
Georgianna Widmer

**Clarence and Corrine Williams**  
Leonard and Dorothy Coppler

**Gilbert and Corrine Williams**  
Dennis and Emma Doogs

**George and Jean Wolph**  
Sharyn (Wolph) Huffman

**Jack Ziegman**  
Carl and Betty Bodart  
Larry Canterbury  
Lee and Anndi Canterbury  
Lyle and Cathy Canterbury  
Hazel Coppler-Rowles  
Claude and Julie Fant & Family  
Terry and Cathy Krupp  
Barbara L. Marley  
Elaine Michney  
Donald B. Murphy  
Mary Anne Nopper  
Dan Nye  
Dan and Laura Ritzler  
Jeff and Lynn Ritzler  
Timothy Sulken, D.D.S.  
Kris and Tom Wenzke

**Marilyn and Jack Ziegman**  
Anonymous

### A Strategic Planning Team

The Strategic Planning Team, with representation from all key components of St. Wendelin Parish and School, has compiled a three part strategic vision for St. Wendelin School. The focus of the plan identifies key issues to be analyzed, with recommendations for growth and improvement.

**KEY ISSUE 1** addresses the two-fold need to determine the optimal enrollment target that is most affordable and realistic for St. Wendelin School, and to develop an operating budget that can sustain the optimal enrollment levels. A realistic 5 year projection offers an overall average of 22 students per class in grades K-8. It is recommended that a realistic 9-12 enrollment target of 40 students per class by 2016 will achieve the lowest cost per student. A 5 year projection was developed for the Annual Fund, which is believed to be attainable with continued development and the implementation of aggressive fundraising strategies.

**KEY ISSUE 2** addresses the need to determine the curricular and extra-curricular program offerings that will contribute the most to reaching and maintaining the optimal enrollment target. The Committee developed a set of “expectations” for graduates of St. Wendelin School. These then served as a guide in developing further recommendations, which include science and lab components, global awareness programs and requirements, 21<sup>st</sup> century learning (online course requirement, community work experience, project-based learning), and writing across the curriculum. It was determined to be more necessary to secure funding for enhancement of on-line and dual enrollment opportunities.

**KEY ISSUE 3** addresses the need to design and implement a comprehensive image campaign for recruitment and retention of students; and for alumni, parish and regional communication, managed by a team of parishioners and other qualified individuals. The committee developed a comprehensive recruitment plan, including mechanisms and discipline for consistently gathering good news utilizing students, staff, parents, parishioners and community; and for communicating that news through appropriate channels. The school will regularly measure student/parent and staff satisfaction through annual surveys of current families, and exit surveys of families that have withdrawn.

## ***Dear Friends of St. Wendelin,***

I am pleased to present the accomplishments of the St. Wendelin Schools Educational Foundation. This past year, the Educational Foundation distributed \$133,739.00 to St. Wendelin School.



I especially want to highlight the conservative approach followed by the Board. We have chosen to remain committed to being good stewards of your generosity. The entire board is actively involved in the oversight of your investments. I would like to thank them for sharing their time and talents to accomplish this important work.

A gift to the endowment fund remains one of the greatest assets you can give to the generations that will follow us. Through such a gift, you insure that the most vital needs for this and all future generations will receive funding when they need it.

The assets of the Educational Foundation now total \$2,600,554.17. Five percent of the assets in unrestricted endowment funds is distributed to the school annually. I thank all of you who, during the past year, began or continued support of the Educational Foundation. You are the ones who strengthen our school security. It is only through your generosity that the Educational Foundation can help school families.

Sincerely,

A handwritten signature in cursive script that reads "Dolores M. Kinn". The ink is dark and the signature is written in a fluid, personal style.

**Dolores M. Kinn**, President

## **“Leaving A Legacy” to St. Wendelin**

Your gifts to St. Wendelin Parish and School support our students in so many ways. If you want to be a part of the Schools Educational Foundation, there are many options to think about. You may choose to give through estate planning, establishment of a scholarship, endowment or a trust. We are grateful for your faith-filled commitment to continuing the quality Catholic education St. Wendelin has provided for more than 100 years. For more information, talk with your financial advisor or call the Development Office at 419-435-6692.

# ► Educational Foundation Contributors

We gratefully acknowledge the generosity of the donors to the Educational Foundation. Gifts listed below were received by June 30, 2011. If we have inadvertently omitted your name, please contact the Development Office at 419-435-6692.



## Contributors

Joe and Laura Collet  
Cooper Tire & Rubber Company\*\*  
Mary Anne Nopper  
John Tobin Estate

## *Gifts In Honor Of*

**Carolyn Baker's 80<sup>th</sup> Birthday**  
Donna Elchert

**Jim and Judy Connors'**  
**50<sup>th</sup> Wedding Anniversary**  
Rita O'Donnell  
Jim and Janet Snyder

**Tom and Carol Hagenmaier's**  
**50<sup>th</sup> Wedding Anniversary**  
Janet Kirian  
John and Margaret Rieker

## *Gifts In Memory Of*

**Joseph Ariza**  
Terry and Jean Baker  
Marla and Duane Boes  
Diane Borer  
Ron and Norma Brown  
Joe and Laura Collet  
John Crawford  
Harold Dehnhoff  
Ned and Linda Ellis & Family  
Aggie Fredritz  
Dale and Annie Fredritz  
John and Mary Fredritz  
Ann Griffin  
Darrell and Sharon Holman  
Vernon and Judy Holman  
Josette and Roger Johnson  
Mary Lykens  
Carla and Donna Meyers  
Greg and Lisa Noel & Boys

John Ray and Donna Scifers  
Cindy and Denny Reinhard  
Joe and Wanda Saum  
Gene and Betty Schalk  
Virginia Schreiner and Sons  
Betty L. Smith  
UAW Local Union 1889  
Tom and Lori Whitta  
Paul and Theresa Williams  
Paul L. Williams  
Betty Woessner, Mary Ann and TJ

## **Haydee Bradner**

Nan Bodart  
Annabelle Bouillon  
Helen Bradner and Family  
Joe and Laura Collet  
Joella Feasel  
Dale and Theresa Heilman  
Bob and Martha Myers  
Paul Williams

## **Joyce A. Brose**

Ray and Marcie Burns  
SWHS Class of 1954

## **Rosemary Clark**

Dick and Bettie Alge  
Tom and Becky Baker  
John and Kris Hadacek  
Steve and Cindy Hammond  
Lindsay Harmon  
Roxanne Harmon  
Bob and Joan Hill  
Toni Lucadello  
Earl Myers  
Kay Pahl  
Bo and Jeanne Risner  
David and Bethany Sherrard  
Tom and Becky Sherrard  
Amanda and Caleb Sorg

## **Lois (Droll) Coleman**

Mary Lou Droll

# Educational Foundation Financial Report ◀

**July 1, 2010 - June 30, 2011**

**BALANCE JULY 1, 2010** **\$2,384,141.63**

**INCOME**

General Donations	\$ 205.00
Special Gifts & Memorials	\$ 8,256.00
Scholarship Donations	\$ 20,354.00
Teachers Are Our Treasure	\$ 150.00
Interest & Dividends	\$ 63,988.99

---

**TOTAL** **\$ 92,953.99**

**DISBURSEMENTS**

Tuition Grants	\$ 108,529.67
Teachers are our Treasure	\$ 2,234.80
Development Office	\$ 22,974.56
Scholarships	\$ 8,300.00
Life Insurance Premium	\$ 3,526.00

---

**TOTAL** **\$ 145,565.03**

**NET** **\$ (52,611.04)**

Realized and Unrealized  
GAIN (LOSS) ON INVESTMENTS \$ 269,023.58

---

**TOTAL NET REVENUE** **\$ 216,412.54**

---

**BALANCE JUNE 30, 2011** **\$ 2,600,554.17**

**Edward Collins**

Mary Gray

**Emiel Cool**

Rosemary Baker

Eileen Beehan

Sr. Marguerite Cool

Joe and Helen Emerine

Joella Feasel

Margie Gehring

Stephen Haaser

John and Kris Janas

Sharyn Mowrey

Mary Anne Nopper



Gene and Betty Schalk

Paul and Sue Sheeter

Shirley Stewart

Ruth and Jim Whitta

Don and Kay Widman

**John Crawford**

Therese Clouse

Donna Elchert

Tom and Carol Hagenmaier

Roxanne Harmon

Phil and Judy Helterbrand

Corde Holman

Frank and Dolores Kinn

# ► Educational Foundation Contributors

Dan and Cynthia McNinch  
Charles and Linda Miller  
Mary Anne Nopper  
Barbara and Dallas Nye  
Paul and Sue Sheeter  
Pat and Jane Sterling  
Jane Wagner

**Richard "Bud" Droll**

Paul and Sue Sheeter

**Donald Elchert and the  
SWHS Class of 1945**

Donna Elchert

**Juanita Elchert**

Carolyn Baker  
Joan and Gary Craft  
Donna Elchert  
Joe Elchert & Family  
Mark Elchert  
Matt Fox and Family  
Rosina Fritz  
Joyce Irwin  
Virginia Kubasek  
Herman and Pat Lucius  
Barbara L. Marley  
George and Therese Vogel Family

**Michael Estock**

Phil and Judy Helterbrand

**Kathleen Fiegelist**

Paul Wagner

**Carl Frisch**

Richard and Rose Ann Gaietto  
Bernice Holman  
Mr. and Mrs. Norbert Kimmet  
Mike and Amy Kleinfelter  
Mr. and Mrs. Don Lucius  
Mr. and Mrs. Gene Reinhart  
& Karen  
Shirley Robbins

**Elizabeth Gabel**

Janice Cool  
Rosina Fritz  
Arthur and Margaret Schleiter

**Kathryn Hallman**

Harold and Sharon Biddle  
Jeff and Deb Hammer

**Stephen Hark**

Alice Hark

**Lucille Hickman**

Mary Lou Droll  
Joanne Reinhart  
Maxine Schultz

**Charles Hohman**

Paul and Kateri DeMargel

**Tony Iannantuono**

John and Kim Bloomfield  
FOE 402 Ladies Auxiliary  
Roger and Germaine Geyman  
Mary Ellen Kennedy  
Judy R. Miller  
Robert and Susan Sponseller  
Jim Wilson

**Leroy Kelbley**

Randy and Tina Farabee

**Eugene Kimmet**

SWHS Class of 1954

**Virgil Krupp**

Tom and Carol Hagenmaier

**Bernadette Kruszynski**

Jane and Ron Bowerman

**David Lee**

Donna Elchert

**Danny LeForge**

Terry and Cathy Krupp

**Marika Lencses**

Bill and Florine Mentel

**Helen Markey**

Fostoria Community Hospital  
Fostoria Community Hospital  
Employees  
Joan Gase Herion  
Norma J. Murray

**Helen (Lonsway) McCartan**

James Lonsway

**Patsy Mennel**

Tom and Sharon Krupp



Dan and Cynthia McNinch  
 Mary Anne Nopper  
**David Miller**  
 Gerry (Boff) Borer  
 George and Diane Boyd  
 Tom and Anita Boyd  
 Pat Brackburn  
 Butch and Linda Bulkowski  
 Barbara Dandurand  
 Pete and Carol Duque  
 Pete and Maria Duque  
 Robert and Linda Durbin  
 Robert Elchert  
 Randy and Tina Farabee  
 Donna Fate  
 Tim and Peg Frankart  
 Sarah and Patrick Hanna  
 Elaine Hunt  
 Cindy, Thomas & Sonia Hunt-  
 Dunne  
 Frank and Dolores Kinn  
 Jane Kovacs  
 Paul Lapczenski  
 Thom and Syble Lonsway  
 Rich and Sherry McClellan  
 Margaret McDowell  
 Donald B. Murphy  
 Jim Ponn  
 Carl Reiter  
 Steve and Lisa Riser  
 Roppe Corporation  
 Betty and Gene Schalk  
 Jane and Herm Vande Kerkhoff  
 Steve and Deb Wise  
 Betty Woessner  
**Judy Miller**  
 Jane and Herm Vande Kerkhoff  
**Lois Miller**  
 Goddard Murphy & Company  
 Employees  
**Rev. Donald Ritzler, C.P.P.S. and  
 the SWHS Class of 1947**  
 Donna Elchert  
**Thomas Ryan**  
 Family and Friends  
**Martha Sargent**  
 Therese Clouse



**Bernadette Seebon**

Paul Wagner  
**Roger Seibert**  
 Christine Baker  
 Lynne Bartz and Family  
 Nan Bodart  
 Sue and Rob Bodart  
 Joe and Dori Bouillon  
 Lori and Charles Boyle  
 Peter Casavant  
 Mike and Therese Clouse  
 Carolyn Corrigan  
 James and Thelma Crawford  
 John Crawford  
 Joe and Helen Emerine  
 Joella Feasel  
 Duane and Marilyn Finsel  
 Judson Frederick  
 Ellen Frey  
 Allen and Shellie Gabel & Family  
 Marian Geroski  
 Dr. Steve and Cyndi Geroski  
 Diane and Charlie Goddard  
 Tom and Carol Hagenmaier  
 Millie Hammer  
 Connie Hoening  
 Kevin and Jackie Hoschak  
 Mike Hoschak  
 Gary and Marie Joppich  
 Kristine and Jerry Jordan  
 Bud and Dolores Kehres  
 Mike and Kim Kehres  
 Steve Kehres  
 Frank and Dolores Kinn  
 Marylin Kinn  
 Sue and Arlen Lowery  
 Barbara L. Marley and Charles Hall  
 Mary Martin  
 Donald L. and Louise Mennel

# ► Educational Foundation Contributors



Carol Miller  
Mary Anne Nopper  
Laszlo and Piroska Papp  
Gary and Barb Reinhart  
Betty and Gene Schalk  
Holly Schultz  
William and Gabrielle Scott  
Mary Ellen Seibert  
Paul and Sue Sheeter  
Agnes Spitzer  
Pat and Jane Sterling  
Nancy and Denny Studrawa  
David and Dianne Uehlein  
Herm and Jane Vande Kerkhoff  
Jim and Ruth Whitta  
Mary Jane Yarris

## **Catherine Smith**

Pat and Larry Metzger  
Carl and Carolyn Schalk  
Steve Schalk  
Mary Smith

## **Jeanne Steyer**

Mike and Peg Beck

## **Donald Stoner, M.D.**

Donna Elchert

## **Margaret (Firth) Strouse**

Barbara (Firth) Kromer  
J. Craig and Rose Watson

## **Geraldine Thomasson**

Donald L. and Louise Mennel

## **Mildred Weidner**

Dr. Steve and Cyndi Geroski

## **Mary Weinandy**

Pat and Robert Holman  
Duane and Rosanna Williams

## **Eleanor Wenzke**

Tom and Rita Arend  
Rosemary Baker  
R. Terry and Mary Ann Beam

Rich and Julie Bulkowski  
Robert Cupp  
Mary Jane Dible  
Genevieve Dorobek  
Mary Lou Droll  
Steve and Debbie Engler  
Dr. Steve and Cyndi Geroski  
A.W. and Cheryl Howett  
Sue and Arlen Lowery  
Mary Anne Nopper  
Suzanne Pelton  
Suzette Pelton  
William and Gabrielle Scott  
John and Sue Sczesny  
Janet Seiler  
Cathy Selvey  
Robert and Marian Strouse  
Todd, Keeler, Paps, Curt, Colleen  
and Matt  
Joanne White  
Mary Jane Yarris

## **Helen G. Whitta**

Chris and Tricia Basinger  
Al and Clara Brickner  
Joe and Helen Emerine  
Byron Flinders  
Fred and Lucy Macias  
Donald L. and Louise Mennel  
Jon, Kathy and Lauren Miller  
Gary and Barb Reinhart  
Doug and Kim Reiter  
Gene and Betty Schalk  
Ruth Schlosser  
Pat and Jane Sterling  
Amy and Greg Williams, Ellie  
& Sean

## **Robert Wolfe**

Patsy Boyer  
Maxine and Michael Lombardy  
Barbara Marley  
Duane and Karen McDonald  
Howard M. Kimes  
John and Cara Papp  
Laszlo and Piroska Papp  
Wilma Vogel  
Mary Ann Welly

(CONTRIBUTORS con't. on page 30)



# History of the Educational Foundation

The first development efforts for St. Wendelin Schools began in 1985, when a group of concerned supporters challenged the community to consider the future of St. Wendelin Schools. The goal of this group was to insure that the quality Catholic education offered at St. Wendelin Schools would be continued into the next century.

The goal in 1986 was to build an endowment fund and use the earnings from investments to fund tuition assistance and other educational needs. A Development Office was established to determine and implement various strategies to provide monies for this endowment fund.

St. Wendelin School Educational Foundation was approved as a non-profit corporation organized under the specifications of section 501 (c)(3) of the Internal Revenue Code. The office is located in the St. Wendelin Parish Center, 323 N. Wood St., Fostoria, Ohio, 44830.

The corporation is governed by the following Board of Trustees:

- |                         |                         |
|-------------------------|-------------------------|
| Bishop Leonard P. Blair | Dolores Kinn, President |
| Michael Amlin           | Donald L. Mennel        |
| Ronald Burns            | Mary Anne Nopper        |
| Connie Fondessy         | Sandy Ridge             |
| Diane Goddard           | Eugene Schalk           |
| Thomas Hagenmaier       | Brian Shaver            |
| Robert Hammer           | Rev. Nicholas Weibl     |



# ► Educational Foundation Contributors

## **Gregory Yonker**

Jeff and Gladys Colburn  
Geraldine Coppus  
Donna Elchert  
Mildred Hammer  
John, Kris and Ryan Janas  
Timothy Karg, O.D.  
Frank and Dolores Kinn  
Tom and Carrie Kramb  
Thom and Syble Lonsway  
Jeanette and John Lynch  
Robin Maier and Jeff Custer  
Barbara Marley and Charles Hall, Jr.  
Karen and Bill Munson  
Robert Podach Family  
Mike and Jenn Pritchard  
Sue Rinehart  
Ernie Russell  
Nick and Deb Shaull

## **Jack Ziegman**

The Brahier Family  
Mike and Sharon Cool Family  
Dr. Steve and Cyndi Geroski  
Gene and Marge Kinn  
Michael Krupp  
Cindy and Joe Taylor  
Mary Jane Yarris

## **Ursula Zoeller**

Dr. Steve and Cyndi Geroski  
Marley and Marley, Attorneys  
at Law  
Laszlo and Piroska Papp  
Gene and Betty Schalk  
Leonard and Kathy Theis  
Theresa and Dennis Theis  
**Barbara (Finsel) Zoltanski**  
Donna Elchert



## **TEACHERS ARE OUR TREASURE**

### *Gifts In Memory Of*

#### **Emiel Cool**

Mike, Sharon and Maria Cool  
William and Janet Navigato

#### **David Masella**

Mark and Karen Emerine

## **KARCHER MUSIC SCHOLARSHIP**

### *Gifts In Honor Of*

#### **Richard E. and Garland Karcher**

Robert and Cheryl Adams  
Richard A. and Connie Karcher

### *Gifts In Memory Of*

#### **Dewitte Barton**

Richard and Garland Karcher

#### **Charles Bouillon**

Richard and Garland Karcher

#### **Emiel Cool**

Richard and Garland Karcher

#### **Richard "Bud" Droll**

Richard and Garland Karcher

#### **Juanita Elchert**

Richard and Garland Karcher

#### **Alvin Hammer**

Richard and Garland Karcher

#### **Clara Huss**

Richard and Garland Karcher

#### **Ruth Ray**

Richard and Garland Karcher

#### **Edward "Ted" Schetter**

Richard and Garland Karcher

#### **Greg Yonker**

Richard and Garland Karcher

## **WM. F. & CORRINE REINEKE SCHOLARSHIP**

National Automobile Dealers  
Charitable Foundation

### *Gifts In Memory Of*

#### **John Crawford**

William F. Reineke, Sr.

**James Kovacs**

William F. Reineke, Sr.

**Patsy Mennel**

William F. Reineke, Sr.

**David Miller**

William F. Reineke, Sr.

**Roger Seibert**

William F. Reineke, Sr.

**Pauline Szymczak**

The Reineke Family

**Elaine Wilson**

William F. Reineke, Sr.

**DAMON PINSKEY  
SCHOLARSHIP FUND**

*Gifts In Memory Of*

**Emiel Cool**

John Pocs

**Richard Droll**

John Pocs

**Betty Elchert**

John Pocs

**Elizabeth Gabel**

John Pocs

**Roger Seibert**

Roger and Kathy Holman

John Pocs

**Andrew Jacoby Walters**

John Pocs

**Eleanor Wenzke**

John Pocs

**James Whitta**

Roger and Kathy Holman

John Pocs

**Gregory Yonker**

John Pocs

**Jack Ziegman**

John Pocs

**Ursula Zoeller**

John Pocs

**FRANK & MARY BUGNER  
SCHOLARSHIP FUND**

Ed and Diane Bugner

John Bugner



Mark and Beth Bugner  
Paul, Pamela, Aiden & Lucille Bugner  
Catherine Noga  
Steve Noga and Carla Lewandowski

*Gifts In Honor Of*

**Clara Bugner Michel's 95<sup>th</sup> Birthday**  
Jane and Herman Vande Kerkhoff

**FR. DONALD HUNTER  
MEMORIAL SCHOLARSHIP FUND**

*Gifts In Honor Of*

**Tom and Carol Hagenmaier's  
50<sup>th</sup> Wedding Anniversary**  
John and Judy Lamberjack

**TIMOTHY G. GREGORY  
MEMORIAL SCHOLARSHIP**

Sharol Cool  
Cooper Tire and Rubber Company  
Tim Gregory Memorial Golf Outing  
John and Tamara Luchini Family  
Plumblin Solutions  
Barbara Routson

**AMELIA WINONA PEAK  
MEMORIAL SCHOLARSHIP**

Don and Louise Mennel  
Adrienne, Matthew and Grayson Peak  
R. Michael and Mary Peak

*Gifts In Memory Of*

**Patsy Mennel**  
Mike and Mary Peak

# ► Educational Foundation

## DAVID J. SHULTZ MEMORIAL SCHOLARSHIP

### *Gifts In Memory Of*

#### Emiel Cool

Roger and Germaine Geyman

#### David J. Shultz

Dr. Harry and Patti Bash

Phil and Trina Boehnlein

Lloyd and Angela Burns

Edna Conkling

Erika Cunningham

Dr. Steve and Cyndi Geroski

Roger and Germaine Geyman

Melvin and Eleanor Householder

Richard and Alice LaFontaine

John and Cynthia Lininger

Chad Kresser

Wayne and Carol Mauk

Ellena Myers

Randall and Dee Dee Myers

Rodney and Bette Reiter

Jan and Deborah Scales

Bernard and Sandra Schneider

Larry and Catherine Schock

Thomas Sciortino

David and Lisabeth Seman

John Sheets

Richard Shultz

Shultz Huber & Associates, Inc.

Terry and Mary Sutherland

Scott and Stacy Tully

## EMIEL AND MARY COOL SCHOLARSHIP

### *Gifts In Memory Of*

#### Emiel Cool

Mary Cool and Family

Kenneth Weickert

Kent Weickert

## JAMES C. WHITTA SCHOLARSHIP

### *Gifts In Memory Of*

#### James C. Whitta

Joe and Dayna Abowd

Marlyn Angles

Chris and Tricia Basinger

Steve and Denise Brown

Nick and Janice Bugner

Ron and Evie Burns

Janice Cool

Dennis and Emma Doogs

Donna Elchert

Joe and Helen Emerine

Joella Feasel

Mr. and Mrs. Allan Hager

Dan and Linda Henley

Andrew Hull

Howard Hull

Norbert and Patricia Kimmet

Frank and Dolores Kinn

Pat and Kenny Knot

Terry and Cathy Krupp

Lyle and Mary Lahman

M&M Construction

Richard and Cory Macias

Mr. and Mrs. Robert Mayle

Donald L. and Louise Mennel

Richard E. "Ed" and Mary Miller

Bob and Nancy Moes

Norma J. Murray

Mary Anne Nopper

Brian and June O'Neill

Ottawa Hills Music & Theatre

Association

Gary and Ann Peltier

Doug and Kim Reiter

Mr. and Mrs. Richard Rook

Gene and Betty Schalk

Pat and Jane Sterling

Beverly Ziegler



## World Youth Day 2011

World Youth Day in Madrid, Spain, welcomed more than one million participants on August, among them eighteen high school and college students from the St. Wendelin School community.

This year's event strengthened faith and made participants realize they're not alone, even across the language and racial barriers, said the St. Wendelin members who attended.

The official World Youth Day ran from August 16-21, but the St. Wendelin group's journey began on August 7, but the international trip has been in the works for about two years.

The group first arrived in Fatima in Portugal, home of one of the world's most famous appearances of Mary, which occurred in 1917. The St. Wendelin group spent three days in Fatima, taking tours and learning the history of the visions and the children involved.

The next stop was in Lourdes, France, where the group watched a rosary procession, visited two cathedrals and visited a grotto that was the location of a vision. Many students felt this visit spiritually stirred them and it proved to be the perfect prelude to World Youth Day itself. The group then arrived in Madrid, where they joined roughly three-quarters of a million pilgrims streaming into the city. Another 250,000 pilgrims came from Spain itself.

The participants also attended the opening day outdoor Mass, a crowded venue of enthusiastic young people. "Any street that you looked down, there were people just as far as you could see," senior Josh Digby said. The next three days, they spent each morning in a catechesis in a small parish outside Madrid with 600 to 700 other English-speaking pilgrims. "There are people praying for you constantly; you don't even know it, but they're out there," St. Wendelin junior Kieran Campbell said. Participants also had a chance for prayer, adorations and confessions, followed by Mass.

Some memorable events were quite impromptu, such as when students from the St. Wendelin group got a chance for an up close view of Pope Benedict XVI. When the Pope's motorcade drove by, Kinn said he was no more than 15 feet away.



## Service Program

To develop a habit of service to God and fellow man, St. Wendelin High School students are required each year to perform a minimum of 25 hours of hands-on service. With the exception of tutoring students or serving as class room aides, this work is done beyond the hours of the school day. Students include in their hours three categories:

- at least 8 hours for St. Wendelin School
- at least 8 hours for church
- at least 9 hours for the wider community

Students normally exceed this requirement. For example, members of the Class of 2011, with just 33 graduates, gave 6,856 hours of service, that's 356 over the total required. And several of these students had more than 200 hours of service each.

The student body in 2010-2011 offered assistance to organizations including:



- American Cancer Society
- Diocese of Toledo
- Good Shepherd Home, Independence House and other nursing facilities
- YMCA
- American Red Cross
- St. Wendelin and the surrounding parishes and churches

## UPCOMING EVENTS

2011 Annual Fund Phonathon	November 14-16, 2011
Toledo Symphony Christmas Concert	Wednesday, December 14, 2011
Action Auction	Saturday, February 4, 2012
Reverse Raffle	Saturday, April 21, 2012
St. Wendelin High School Graduation	Sunday, May 27, 2012
St. Wendelin Parish Festival	June 8-10, 2012
10 Years of Mohawks Reunion	Saturday, June 9, 2012

## Service In Action

The SWHS Mohawks Football Team visited Toledo Children's Hospital in August, spending time and playing with young patients who found themselves in need. "I think our kids weren't really quite sure what to expect, but they were all smiling when they left and I think that they had all felt that they'd done something good," St. Wendelin coach Bill Hrabak said. "For a short period of time they changed kids' lives by being playmates and just being kids with them."



Hrabak said he'd been thinking about taking players to the hospital for some time after hearing about colleges doing similar things; he felt the event would tie in perfectly with the school's community service focus. Showing his players the importance

of not taking things such as health for granted was also important, he added. Hrabak said that thankfully there weren't many children at the hospital on the day of the trip, but the ones the Mohawks visited with enjoyed the experience.

One youngster was confined to his bed after surgery, but Hrabak said he was soon talking about being a Michigan fan and asking the players if there were pretty girls at St. Wendelin.

Another patient was a shy girl who found out football's not just for boys. She met senior Haley Wolfe, St. Wendelin's senior kicker, and the pair spent their time playing foosball and air hockey before parting with a hug.

And there were as a not-so-shy 5-year-old playing air hockey with his father. "Austin Reinhart jumped right up and said 'I'm gonna take you!'"

Hrabak said he hopes to make the visit to the hospital an annual event. "I think after this experience, it's something that we should do every year, especially being a Catholic school," he said.

*(Story reprinted partially from the Fostoria Focus)*



ST. WENDELIN  
CATHOLIC SCHOOL  
533 N. Countyline Street  
Fostoria, OH 44830

**ADDRESS SERVICE REQUESTED**

Non-Profit  
Organization  
US POSTAGE

**PAID**

Permit No. 179  
Fostoria, Ohio

Visit us at  
[www.stwendelin.org](http://www.stwendelin.org)  
and on facebook!